

Star★Types

by Michael Erlewine

L I F E S T R A T E G Y

Trading on Your Talents



StarTypes Strategy Report for:
Peace Jaway

This reading compliments of:

Compliments of -
Moments of Awareness
613 Robie Creek Road
(208) 433-0336
momentsofawareness.com

Table of Contents



Index

1	Introduction
2	StarType Profile
3	Talents
4	What You Want
5	Strategy
6	Approach to Relationships
7	StarType Elements
8	Social Skills
9	Relationships
10	Job Placement
11	Business Skills
12	Polarities
13	Conclusion

Introduction to Star★Types

L I F E S T R A T E G Y



StarTypes is a new approach to astrology, one that combines the ancient and venerable tradition of astrology with the insights of modern astronomy and the solar system. Using large-scale whole-chart planetary patterns, StarTypes defined two completely different views of your birth, two different perspectives on the same moment in time and the same planets, combine to provide an almost three-dimensional view of the birth moment. Developed by well-known astrologer Michael Erlewine over a 40-year period, StarTypes excels at defining relationships and vocational issue, an astrology for the 21st Century.

Star★Types Profile



We all have talents and we all have needs and wants. Just as in the workplace we trade our talent (work) for what we need (money, security, etc.), astrologically StarTypes are no different. Each StarType has certain innate gifts or talents, something that makes us special and valuable. It can be important to know what those talents are.

By the same token, each StarType also has legitimate wants, areas where we tend lack functionality, areas we might want to shore up and strengthen

Life is a vast commodities trading center, where StarTypes of all kinds build relationships that are complementary. You may have what I am missing and vice versa, so we become friends or co-workers. Or even if you have nothing to trade with me, I may have a talent for some work that I can do for you to gain access to the missing ingredients that I need.

Money and things is not all we trade or barter. Love relationships, friends, partnerships, co-workers, families, etc., all are made of matched components, like jigsaw-puzzle pieces, each dovetailing into one another. Everything from a two-person partnership to our friendly poker party to small and large corporations, all are made up of individuals fitting together into a team or group. Like a patchwork quilt, we all fit together individual piece by piece.

It does not so much matter what talents you have, whether they are few or many. What is important is that you are aware of what you are worth, the talents you do have, and know how to use them to get what you want. This is what this section is about.

In the sections that follow you will find a discussion of your talents, another on what you lack and might want to improve on, and also a section on just how you might go about balancing yourself by forming strategic relationships of various kinds, suggestions on how to use what you have and get what you want. And finally, there is a section on how you approach relationships, with suggestions on the other StarTypes with which you might want to partner up.

Peace has great conceptual abilities, grasps things with her mind with ease, and can pick out the patterns right off. This talent for grasping abstract concepts makes her perfect for management that involves planning, in particular going forward. Peace is naturally forward looking, eager and interested in the future, perhaps even somewhat of a visionary. She is compassionate, aware of others, and is generally kind. There is one other point. Peace's rather brilliant ideas always seem to come from a non-standard perspective. Her rather original point of view is always spot-on, but there is almost always something of a twist to where she is coming from, a different perspective. Peace marches to a different drummer.

Your Talents



We all have various talents. They are what we have to use to make our way (and make a living) through life. Some StarTypes have many talents and others have just a few. Many or few talents are not as important as being aware of those you have and thus knowing what you can do and have to offer to others in exchange and partnership. Here is an overview of you talents.

You have a pristine mind, one of the very few StarTypes cards to really have top-down vision, the ability to grasp a situation at a glance, put it all together and see both the puzzle pieces and the picture in the puzzle at the same time.

Yours is a mental and analytical talent, brilliant at analysis and visionary blue-sky perspective, and not one limited only by purely practical considerations. Furthermore, your approach or view is seldom of the garden variety, but tends to be unique or at least very different from the average consensus. You always appear to other to be coming from somewhere no one ever thought of, perhaps from left field to some, but on inspection your ideas and views are sound. They work.

In general, you are purely a mental being, not easily coaxed into the physical world and in no way a glad-hander. We can get into your social graces in the sections below.

What You Want, What You Lack



We are not only made up of talents. Some talents, however useful they are, also have a downside. And in other areas of life we may just not have any talent at all. Before we can do something about what we lack or want, we have to be aware of just what areas we come up short on. Knowing our weak points is essential for any kind of adjustment. If we don't see what's missing we can't compensate for that. Here are some of the main problem areas for this StarType.

"The bigger the front, the bigger the back"

is an old slogan that fits here. For all your keen mind and mental brilliance, you have some baggage that goes along with that as well, chief among which is your tendency to (literally) count yourself out or retreat to a safe distance and watch. The same mental and critical faculties that are your strength, also can separate you from a normal life by your not being able to simply turn them off and join the crowd. The price of criticism is often distance, almost by definition.

This StarType is also known for just being shy, retiring, and at times just too accommodating, always taking the back seat until they are up against a wall. This is something you should be aware of and can control if you have a mind to. Yours is not an independent type, but an inter-dependent type, one that does not do well on their own, but flourishes in companionship and groups, despite thoughts to the contrary. You are needy in this way, and your innate responsibility and ability to care should be presented as a virtue, and not a liability. More on this below.



Given a knowledge of our talents and also our weak spots, we can begin to come up with a strategy to best use our strong points and make up for those areas where we just can't compete. One good approach is to go to school on our weak spots and compensate for them. This is what education is all about. However, this is not our only approach.

Some areas we may just naturally have no appreciable talent. In these cases, we can borrow some talent from others by partnering up with them. This might be a life partnership, of course, but all of our relationships (friends, co-workers, family, etc.) are a matching up of talents and weaknesses on both side. We can make up for what we are missing through forming partnerships with those that have what we lack. And the reverse is also true. We can share our talents with those who have less that we do in that area. Relationships are essential one vast area of talent exchange. Lets' take a look at how you might approach this.

The key takeaway thought here is to balance your natural tendency to hole up in the mind and to avoid physical contact. If you are abstracting into less contact, you are going the wrong way, and it will only get more difficult. Instead, you need more not less contact, more social and group experience. It is the physical rubbing of shoulders and putting up with all manner of folks that will galvanize and restore your tendency to become an abstraction.

As for StarTypes, it is the red-bordered cards that you need to partner up with, or at least the blue-bordered cards with the big red square in them. These red-blooded types are the circulation you need to have in your life.

In summary, you have a unique vision, but one that can at times lack plain-old common sense, the practicality that puts your vision to work and makes it worthwhile. Our dreams must be made to matter and that means being practical. Practicality is what is missing in your StarType. Yes, you have analytical practicality, but I am speaking here of where the rubber meets the road, physically going through the process of manifesting what we see or dream.

Approach to Relationships



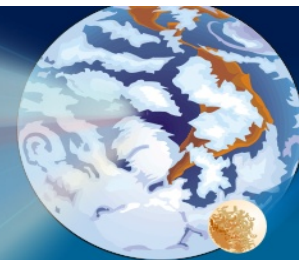
When it comes to relationships, Peace needs them, which suggests that a partner will be pretty much always present, and mostly with the RED StarTypes, those who are more touchy-feely and practical than herself. These types will not cease to provide her with a steady stream of real experience, so that she can at least know what she talks about so well. They cause her to ground her thoughts and observation in experience and fact, and to work out thoughts on the practical plane.

Relationships? Yes indeed, you don't like to be without one and definitely fall into the interdependent category rather than independent. You pretty much require relationships to be happy and you only play one role, and that is the role of the lover or provider, the one who takes care of whatever needs tending.

It is possible, if you are really shy that you will choose a StarType like yourself (green-bordered cards), but that will only work if you share some very strong common goal. Some types are too prone to bickering and criticizing one another. You will have better chemistry with one of the red-bordered cards, someone who craves attention, which you can and love to give.

As for your propensity to come at folks from some weird mental angle, let me say this. Yours is a StarType with a very bright mind, and you 'get it" right off, so that is not a problem. What can be disturbing is that almost always what you have to say appears to come out of left field or at least be 180-degrees out-of-phase or different from conventional thought. It is not that you are wrong in your thinking (you are not), but that your angle on things may at times be off-putting if someone does not know you well. You might want to temper this as you get to know a new person.

Star★Type Elements



The table on this page represents the essential StarType elements for each partner, and not just the key StarType for each. These main elements are marked with a checkmark along the left and right sides of the table, along with how many times they occur, their StarType number, and a percentage indication as to how strong the element is (100% is the strongest possible). The four basic relationship types are color-coded from top to bottom, with green for the **Lover** StarType, red for the **Loved One** StarType, blue for the **Independent** StarType, pink for the **Multi-relational** StarType, and yellow for other types.

The purpose of the table is to let you see at a glance the various components of the relationship and their strengths.

Peace



Occ.	ST#	%	Description	%	ST#	Occ.
			Compassionate, Big Picture, Lover			
			Proactive, Entrepreneurial			
✓ 1	#42	94%	Alternate View			
			Psychological, Mental, Complex			
✓ 1	#50	01%	Caring, Mental Work			
			Little Obsessive, Recursive Mind			
			Seminal, Deep			
			Attractive, Gregarious, People Loving			
			Busy Achiever, Doing, Doing			
			Very Independent, Self-sufficient			
			Creative: Acts, then Thinks			
			Conceptual: Thinks, Then Does			
			Very Active Psychological, Mystic			
			Psychological, Spiritual Doer			
			Laser Mind, Can Think and Do			
✓ 2	#30	68%	Enjoys Many Contacts, Many Places			
			Reactive, Responds to Anything			
✓ 1	#22	93%	Yearning, Waiting, Wishing			
✓ 1	#45	01%	Extra Creativity			
			Synchronicity, Coincidence			
			Completion			



For Peace

Marching to a different drummer, you've heard the phrase. Well, that fits Peace and this StarType to a 'tee'. Here we have extra-ordinary intellect, a real talent for sizing up a situation at a glance. There is only one caveat and that is that she always has an alternate view of almost everything, not that this is in any way a defect. She is usually spot on with her observations, but, again, always coming from a new or alternate way of looking at things. Peace's mind is all encompassing and her opinion is considered essential, albeit unique. When it comes to relationships, Peace needs them, which suggests that a partner will be pretty much always present, and mostly with the RED StarTypes, those who are more touchy-feely and practical than herself. These types will not cease to provide her with a steady stream of real experience, so that she can at least know what she talks about so well. They cause her to ground her thoughts and observation in experience and fact, and to work out thoughts on the practical plane. A StarType very thirsty for relationships, most important being to seek out any of the red-bordered cards, which will help to ground and make you more practical. On the other hand, the green-bordered cards with the large green triangles in them, like StarTypes #60, #5, #18, and so on will bring good advice and guidance. You can enjoy both types of relationships. As for the blue-bordered cards, not shown here, keep in mind that they have the qualities of both the red-bordered and the green-bordered cards within their makeup. When relating to them, Peace will want to invoke the attention-demanding part of them, having them take on the role of the loved one - someone for her to look after.

- Alternative Viewpoint.
- Conceptual.
- Psychological.
- Introspective.

Social Skills



Social Being:

Peace is not comfortable as a social being, although she may think so. Intellectually social? Yes, and perhaps eager, but rubbing shoulders and the give and take of at a cocktail party? Probably not.

Meet & Greet:

Peace does not naturally enjoy meeting & greeting, the usual social glad-handing that is expected of one when business calls for it. She likes the intellectual banter, but essentially is shy.

Sensitivity:

Peace is (or can be) very sensitive, perhaps often somewhat shy, and even self-effacing at times.

Wallflower:

Yes.

Private:

Peace is not private, but rather open, at least mentally and psychologically. No secrets.

Direct/Indirect:

Peace is naturally direct and straightforward. What you see is what you get.

Collegial:

Peace is always formally (and intellectually) friendly and collegial, but is not naturally warm or very social, probably won't offer you the fraternity handshake.

Self-Confidence:

Peace is intellectually confident, but may be socially less so.

Your Approach to Relationships



Relationships:
Peace needs relationships.

Romantic Role:
Peace likes to take on the role of "lover" or caretaker in a relationship.

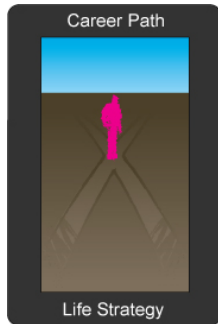
Office Role:
In an office environment, Peace prefers the role of supervisor or manager of some kind.

Independent:
No.

Interdependent:
Yes.

Needy:
Yes, in relationships.

Job Placement



Business type:
Conceptual.

Responsible:
Yes, very.

Management Skills:
Excellent.

Salesperson:
No.

Teamwork Skills:
Intellectual teamwork, yes.

Advisor:
Peace makes a good advisor.

Supervising:
Yes, the best.

Business Skills



Communication Skills:

Yes, at mental communication.

Intuitively Creative:

Not naturally good.

Work Ethic:

Very responsible.

Analytical Skills:

Excellent.

Organizational Skills:

Good organizational skills.

Detail Work:

Good at detail work.

Thoughtful:

Very.

Smart:

Yes, very smart.

Intellect:

Excellent.

Interpersonal Skills:

Best at verbal and written.

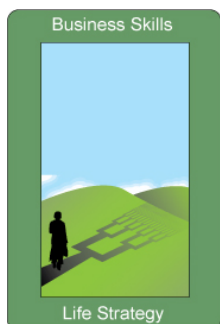
Problem Solving:

Good.

Group Leader:

Probably not, or if so, then intellectually only.

Polarities



The following is a simple list of polarities (many traditional) as they relate to Peace and her particular StarType. These are included on the case that the earlier material is not sufficiently clear on. Perhaps looking at Peace through this list of polar opposites may help make things more clear and provide a better feeling for this person. Here is the list:

Host or Guest:
Prefers the role of host.

Impress/Express:
Likes to impress.

Watcher/Watched:
Watcher.

Reason/Intuition:
Reason rather than intuition.

Careful/Careless:
Careful.

In/Out:
Out and wants in.

Evolve/Involve:
Wants to be more involved.

Subject/Object
: Assumes the role of subject.

Lover/Loved One:
Likes the role of the 'Lover'.

Mental/Physical:
More mental than physical.

Self-Conscious?:
Yes.

Sensitivity or Lack-of?:
Sensitive.

Awareness Factor:
Very aware.

Vertigo/Claustrophobia:
Vertigo.

Foresight/Hindsight:
Foresight.

Seeing/Feeling:
Seeing.

Reasonable/Unreasonable:

Reasonable.

Yin/Yang:

Yin.

Subtle/Dense:

Subtle.

Spirit/Flesh:

Spirit.

Service Factor:

Born to serve.

In/Out:

Outside looking in.

Active/Passive:

Passive, like Aikido.

Conclusion



Welcome to StarTypes, your personal astrology report written and illustrated by astrologer/author Michael Erlewine who, with over 40 years of experience in astrology, has written some twenty-some books on astrology and dozens of computer astrological programs. Erlewine writes:

"I have lectured, taught classes, and done private consultations for more years than I want to think about. What I have found works best is a one-to-one presentation of the astrological chart - your personal astrology. In the StarTypes reports, I have tried to do just that: walk you through what is most important about your astrology chart, step-by-step, just as I would if we sat down together for a chart reading. StarTypes Reports are illustrated and easy to read. After all, they are all about you!"