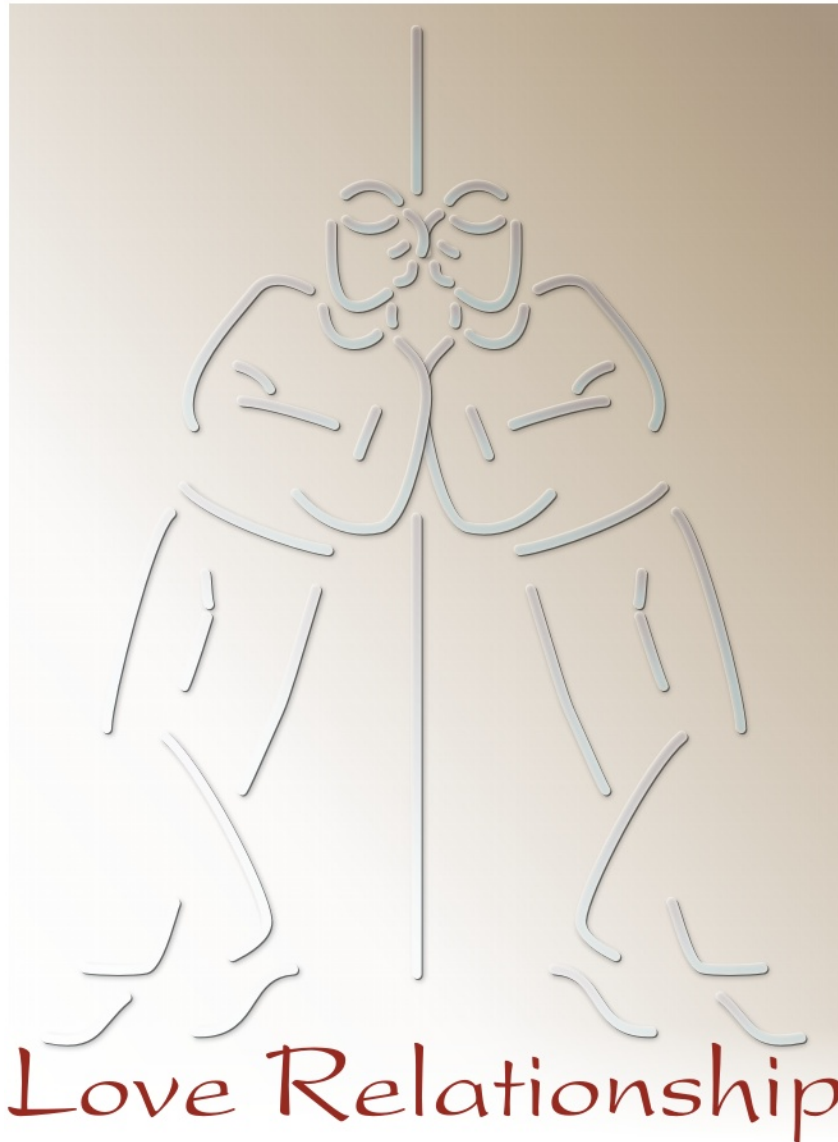


Star★Types

by Michael Erlewine

C O M P A T I B I L I T Y



StarTypes Compatibility Report for:
Peace Jaway and Dude Jaway

This reading compliments of:

Compliments of -
Moments of Awareness
613 Robie Creek Road
(208) 433-0336
momentsofawareness.com

Welcome



Welcome to StarTypes, your personal astrology report written and illustrated by astrologer/author Michael Erlewine who, with over 40 years of experience in astrology, has written some twenty-some books on astrology and dozens of computer astrological programs. Erlewine writes:

"I have lectured, taught classes, and done private consultations for more years than I want to think about. What I have found works best is a one-to-one presentation of the astrological chart - your personal astrology. In the StarTypes reports, I have tried to do just that: walk you through what is most important about your astrology chart, step-by-step, just as I would if we sat down together for a chart reading. StarTypes Reports are illustrated and easy to read. After all, they are all about you!"

Patterns in the Sky



StarTypes astrology is both ancient and modern. It is ancient, because it uses the traditional natal chart that astrologers have used throughout history. It is modern because it also takes advantage of what astronomers have learned about the heavens and our solar system in these modern times. The result is a unique combination of ancient and modern astrology that provides a unique perspective on your particular birth chart and therefore your life. This is how it works:

StarType analysis plots large-scale planetary patterns as seen from Earth and compares those patterns to corresponding patterns astronomers see functioning throughout our entire solar system. StarTypes charts not only the outer circumstances of your birth (your personality and Karma), but also the internal and spiritual qualities embedded in that same moment, your inner motivation, what has been called your Dharma or Life Path. The result is an enhanced perspective that in effect amounts to a stereo image of your birth moment and chart, looking inside and out.

StarTypes analysis offers a very complete perspective on your birth moment, with insights into what talents you naturally have, how those talents might be used, as well as your relationship role with partners, romantic and otherwise. Check it out. What follows is your own StarType report. I hope you enjoy it.

Michael Erlewine, Author of StarTypes



StarType for Peace

The heavens above and surrounding us are in constant change as the Sun, Moon, and planets move in their orbits to create vast kaleidoscope-like patterns in the sky, what has been rightly called "The Cosmic Dance." StarType analysis sorts through these many changing patterns and isolates the strongest and most pronounced pattern in effect at the moment of your birth. This cosmic pattern or archetype is your "StarType," and it best represents what is happening in the heavens at the moment of your birth. All in all there are some sixty major StarType patterns that have been recognized, and each represents a particular kind of individual and approach to life.

Your StarType is more than just your personality and the circumstances in which you happen to find yourself in life. It also describes who you are at heart, the real inner you behind all that is going on the outside, plus your possibilities - how you look at and approach life. StarTypes reveal the 'you' as only your closest friends know you, as you know yourself. What follows is a description of our StarType.



This StarType:

Marching to a different drummer, you've heard the phrase. Well, that fits Peace and this StarType to a 'tee'. Here we have extra-ordinary intellect, a real talent for sizing up a situation at a glance. There is only one caveat and that is that she always has an alternate view of almost everything, not that this is in any way a defect. She is usually spot on with her observations, but, again, always coming from a new or alternate way of looking at things.

Peace's mind is all encompassing and her opinion is considered essential, albeit unique.



StarType for Dude

The heavens above and surrounding us are in constant change as the Sun, Moon, and planets move in their orbits to create vast kaleidoscope-like patterns in the sky, what has been rightly called "The Cosmic Dance." StarType analysis sorts through these many changing patterns and isolates the strongest and most pronounced pattern in effect at the moment of your birth. This cosmic pattern or archetype is your "StarType," and it best represents what is happening in the heavens at the moment of your birth. All in all there are some sixty major StarType patterns that have been recognized, and each represents a particular kind of individual and approach to life.

Your StarType is more than just your personality and the circumstances in which you happen to find yourself in life. It also describes who you are at heart, the real inner you behind all that is going on the outside, plus your possibilities - how you look at and approach life. StarTypes reveal the 'you' as only your closest friends know you, as you know yourself. What follows is a description of our StarType.



This StarType:

Dude's mind and psychological prowess is the key to understanding his StarType. It is ALL about mental processes and mental states. He has a very strong mind and could be an expert psychologist and, at any rate, cannot avoid learning about the mind in all of its inner mechanisms and wanderings.

Naturally compassionate and responsive, Dude lives by his wits and intellectual abilities, and not by his group or people skills. If anything, he runs to the cool side. If there is any downside to all of this psychological prowess, it would be perhaps a tendency to get a little lost in the mind and wake up locked into one mental syndrome or another, some mental habit that is roaring like a freight train, who knows where. So take note.

Approach to Relationships



Approach to Relationships - Peace



When it comes to relationships, Peace needs them, which suggests that a partner will be pretty much always present, and mostly with the RED StarTypes, those who are more touchy-feely and practical than herself. These types will not cease to provide her with a steady stream of real experience, so that she can at least know what she talks about so well. They cause her to ground her thoughts and observation in experience and fact, and to work out thoughts on the practical plane.

Approach to Relationships



Approach to Relationships - Dude



As presented, Dude is more mental than physical, and would very much benefit from being drawn more down to earth. And relationships are one excellent way to help this happen. Being so mental, it is easy for him to get out of touch with day-to-day reality, the price-of-milk sort of thing. In fact, physicality - touching, feeling, hugging - is something that he should keep on his radar screen, since it can be easy for this StarType to let these more physical parts of life just slip away. Dude needs contact with other people and even just plain old physical contact.

So relationships are a natural for him, and he will tend to take on the roll of caregiver and lover - The Lover. His nature is to attend to, worry about, and generally look after others. A partner who is quite physical, even a trifle crude at times, would do him no harm. It might rock his dreamy boat, but it would help to wake him up to his physical nature and help to pull him down to earth.

Relationships are one excellent way to help this happen. Being so mental, it is easy for him to get out of touch with day-to-day reality, the price-of-milk sort of thing. In fact, physicality - touching, feeling, hugging - is something that he should keep on his radar screen, since it can be easy for this StarType to let these more physical parts of life just slip away. Dude needs contact with other people and even just plain old physical contact.

So relationships are a natural for him, and he will tend to take on the roll of caregiver and lover - The Lover. His nature is to attend to, worry about, and generally look after others. A partner who is quite physical, even a trifle crude at times, would do him no harm. It might rock his dreamy boat, but it would help to wake him up to his physical nature and help to pull him down to earth.



Things Are Not Always What They Seem - Peace

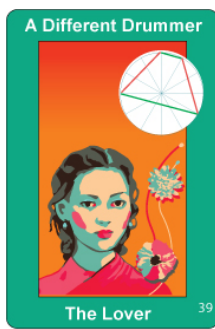
Things are not always what they seem, especially when meeting someone for the first time. How do those around you see you? Are you a "What You See Is What You Get" type or are you a "What You See is Not What You Get" type. Are you different once folks get to know you? StarTypes has a way of measuring the difference.

On the following page is a comparison of the traditional astrology chart of the outer appearances of this individual (personality), the way this person comes across AND the chart of their inner Self (Dharma chart), the individual as they are when you come to know them better. This will give you an idea if what you see is in fact what you get.

Your Inner and Outer StarTypes



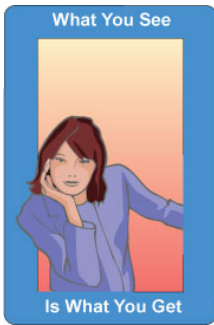
Inner StarType



Outer StarType

Above find your inner and outer StarType cards. Perhaps the more important of the two is the inner StarType, the one on the left. This is what is called your Dharma of Life-Path Chart. It is who you are inside, as people get to know you. This is your heart essence, how you function in this world.

On the right is the chart of how you appear to others, your personality, the way you come across upon first contact - the initial impression. These two cards can be similar in type and function or very different. If the border color of the cards is the same (green, red, blue, or rose), then you are more-or-less how you appear, that is: what you see is what you get. If they are different, colors, then you may be quite different on first impression than you are when people get to know you. In that case, what you see is not what you get.



StarType Appearances

You Are What You Appear To Be

There is no difference between how this person appears and how they are when you get to know them. What you see is what you get. Peace is Very idea oriented, at home in the mind, perhaps a little shy or awkward socially, but a strong idea person, skilled with words, and able to grasp patterns and concepts with easy. Not too social, but very caring for others, and compassionate.



Things Are Not Always What They Seem - Dude

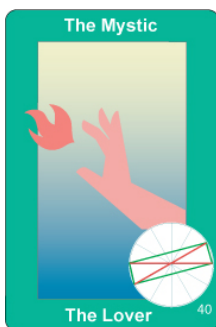
Things are not always what they seem, especially when meeting someone for the first time. How do those around you see you? Are you a "What You See Is What You Get" type or are you a "What You See is Not What You Get" type. Are you different once folks get to know you? StarTypes has way of measuring the difference.

On the following page is a comparison of the traditional astrology chart of the outer appearances of this individual (personality), the way this person comes across AND the chart of their inner Self (Dharma chart), the individual as they are when you come to know them better. This will give you an idea if what you see is in fact what you get.

Your Inner and Outer StarTypes



Inner StarType



Outer StarType

Above find your inner and outer StarType cards. Perhaps the more important of the two is the inner StarType, the one on the left. This is what is called your Dharma of Life-Path Chart. It is who you are inside, as people get to know you. This is your heart essence, how you function in this world.

On the right is the chart of how you appear to others, your personality, the way you come across upon first contact - the initial impression. These two cards can be similar in type and function or very different. If the border color of the cards is the same (green, red, blue, or rose), then you are more-or-less how you appear, that is: what you see is what you get. If they are different, colors, then you may be quite different on first impression than you are when people get to know you. In that case, what you see is not what you get.

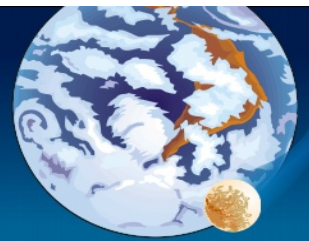


StarType Appearances

You Are What You Appear To Be

There is no difference between how this person appears and how they are when you get to know them. What you see is what you get. Dude is Very idea oriented, at home in the mind, perhaps a little shy or awkward socially, but very wordy, interested in the psychological and the philosophical. Not a people person. Caring for others, and compassionate.

Star★Types Relationships



The table on this page represents the essential StarType elements for each partner, and not just the key StarType for each. These main elements are marked with a checkmark along the left and right sides of the table, along with how many times they occur, their StarType number, and a percentage indication as to how strong the element is (100% is the strongest possible). The four basic relationship types are color-coded from top to bottom, with green for the [Lover] StarType, red for the [Loved One] StarType, blue for the [Independent] StarType, pink for the [Multi-relational] StarType, and yellow for other types.

The purpose of the table is to let you see at a glance the various components of the relationship and their strengths.

Peace



Dude



Occ.	ST#	%	Description	%	ST#	Occ.	
			Compassionate, Big Picture, Lover				
			Proactive, Entrepreneurial	29%	#5	1	✓
✓	1	#42	94% Alternate View				
			Psychological, Mental, Complex	53%	#4	1	✓
✓	1	#50	01% Caring, Mental Work	01%	#50	4	✓
			Little Obsessive, Recursive Mind				
			Seminal, Deep				
			Attractive, Gregarious, People Loving				
			Busy Achiever, Doing, Doing				
			Very Independent, Self-sufficient				
			Creative: Acts, then Thinks				
			Conceptual: Thinks, Then Does				
			Very Active Psychological, Mystic				
			Psychological, Spiritual Doer				
			Laser Mind, Can Think and Do				
✓	2	#30	68% Enjoys Many Contacts, Many Places	68%	#30	1	✓
			Reactive, Responds to Anything	74%	#20	3	✓
✓	1	#22	93% Yearning, Waiting, Wishing	15%	#23	2	✓
✓	1	#45	01% Extra Creativity	40%	#43	1	✓
			Synchronicity, Coincidence				
			Completion				



For Peace

Marching to a different drummer, you've heard the phrase. Well, that fits Peace and this StarType to a 'tee'. Here we have extra-ordinary intellect, a real talent for sizing up a situation at a glance. There is only one caveat and that is that she always has an alternate view of almost everything, not that this is in any way a defect. She is usually spot on with her observations, but, again, always coming from a new or alternate way of looking at things. Peace's mind is all encompassing and her opinion is considered essential, albeit unique. When it comes to relationships, Peace needs them, which suggests that a partner will be pretty much always present, and mostly with the RED StarTypes, those who are more touchy-feely and practical than herself. These types will not cease to provide her with a steady stream of real experience, so that she can at least know what she talks about so well. They cause her to ground her thoughts and observation in experience and fact, and to work out thoughts on the practical plane. A StarType very thirsty for relationships, most important being to seek out any of the red-bordered cards, which will help to ground and make you more practical. On the other hand, the green-bordered cards with the large green triangles in them, like StarTypes #60, #5, #18, and so on will bring good advice and guidance. You can enjoy both types of relationships. As for the blue-bordered cards, not shown here, keep in mind that they have the qualities of both the red-bordered and the green-bordered cards within their makeup. When relating to them, Peace will want to invoke the attention-demanding part of them, having them take on the role of the loved one - someone for her to look after.

- Alternative Viewpoint.
- Conceptual.
- Psychological.
- Introspective.



For Dude

Dude's mind and psychological prowess is the key to understanding his StarType. It is ALL about mental processes and mental states. He has a very strong mind and could be an expert psychologist and, at any rate, cannot avoid learning about the mind in all of its inner mechanisms and wanderings. Naturally compassionate and responsive, Dude lives by his wits and intellectual abilities, and not by his group or people skills. If anything, he runs to the cool side. If there is any downside to all of this psychological prowess, it would be perhaps a tendency to get a little lost in the mind and wake up locked into one mental syndrome or another, some mental habit that is roaring like a freight train, who knows where.

So take note. As presented, Dude is more mental than physical, and would very much benefit from being drawn more down to earth. And relationships are one excellent way to help this happen. Being so mental, it is easy for him to get out of touch with day-to-day reality, the price-of-milk sort of thing. In fact, physicality - touching, feeling, hugging - is something that he should keep on his radar screen, since it can be easy for this StarType to let these more physical parts of life just slip away.

Dude needs contact with other people and even just plain old physical contact. So relationships are a natural for him, and he will tend to take on the roll of caregiver and lover - The Lover. His nature is to attend to, worry about, and generally look after others. A partner who is quite physical, even a trifle crude at times, would do him no harm. It might rock his dreamy boat, but it would help to wake him up to his physical nature and help to pull him down to earth. Relationships are one excellent way to help this happen.

Dude's mind is where he spends his time, and using the mind to analyze and serve others is a major talent. His sense of psychology is profound and always to the fore. The winds of the mind are always blowing for him and, as mentioned earlier, if there is one caution, it is for him to be careful not to be drawn into mental syndromes or loops, which can be hard to break out of. As for reaching out, it would be beneficial for Dude to spend time with the red StarTypes, such as the T-Square types, where he can actually get more down to earth, feel more, and get more common sense -- enjoy himself a bit. On the other hand, accessing GREEN LINE Star Types, like the Grand Trine and the KITE (StarType # 5), will help to clear up mental cloudiness that sometimes creeps into his StarType. These types are a natural astringent and, like smelling salts, help to wake him up. As for the blue-bordered cards, keep in mind that they have the qualities of both the red-bordered and the green-bordered cards within their makeup. When relating to them, Dude will want to invoke the attention-demanding part of them, having them take on the role of the loved one - someone for him to look after.

KEYWORDS

- Powerful mind and mental presence.
- An innate sense of psychology and a looking inward.
- Conceptual.
- Psychological.
- Introspective.

Relationship List



Relationships - Peace



Relationships:
Peace needs relationships.

Romantic Role:
Peace likes to take on the role of "lover" or caretaker in a relationship.

Office Role:
In an office environment, Peace prefers the role of supervisor or manager of some kind.

Independent:
No.

Interdependent:
Yes.

Needy:
Yes, in relationships.

Relationship List



Relationships - Dude



Relationships:
Dude needs relationships.

Romantic Role:
Dude likes to take on the role of "lover" or caretaker in a relationship.

Office Role:
In an office environment, Dude prefers the role of supervisor or manager of some kind.

Independent:
No.

Interdependent:
Yes.

Needy:
Yes, in relationships.

Basic Compatibility

Naturally compassionate ■ Lack of enthusiasm
Aware of others ■ High energy
Generally kind ■ Ambitious
Solid management talent ■ Driven to succeed
Not a touchy-feely type of person ■ Grasp concepts
A bit of a dreamer ■ Pick out patterns
Thinks outside the box ■ Persistent drive
High energy ■ A bit of a dreamer
Runs to matters of the mind ■ The Entrepreneur
Is not much fun ■ Thoughtful, careful, and meticulous
Abstract ■ Not a people person
Meticulous ■ Enthusiasm
Do much theory ■ Runs cool, not warm
Appreciate in social situations ■ A good group leader
A good person ■ A great advisor or consultant



Dude: StarType #04, "The Psychologist"

Peace: StarType #42, "A Different View"

Talk about a war of the words, here are two very cerebral, highly conceptual souls, each of which takes to the care-giving role of the lover. Probably not a romantic relationship, unless there is some shared goal or work to be done. Two visionaries, and not of the same variety. Peace has a very powerful mind, as does Dude, but always from a unique and different perspective. Mix these two together and they should have some brilliant conversation, if nothing else.

Lovers Comparison



This is not a relationship with a lot of natural or traditional chemistry, so be forewarned, which is not to say it cannot work. Both parties here are mental dreamers, intellectuals, thinkers, and above all: critics! When you put two critics together, there has to be something for them to criticize other than each other, so there is the rub.

To make this relationship work, Peace and Dude would have to agree or find something other than themselves that is more important to apply their minds to. It could be children, some public cause, a hobby or sport - whatever - but it better be something outside of the relationship for them to relate to. Understand?

And we probably should differentiate among these two thinkers as to the kind of thinking they like to do. Of the two, Dude is the "big-picture" thinker, the one who sees the forest AND the trees, while Peace is more the psychologist or inspirational thinker, if there is such a term. In other words, Dude should be advising Peace on big issues, and not vice-versa, and Peace should take care of the psychologizing and candle-lighting. Again, the key to a working relationship here will be common goals, not the common mind.

The Inner Relationships



This is indeed a meeting of the minds, for both Peace and Dude are ever so mental, and so intellectually able. Peace just naturally gets the picture of what is going on, and probably intrigues others with how different (but accurate) a perspective she comes up with. Dude, on the other hand, while not as conceptually gifted as Peace, runs the gamut when it comes to fringe and edgy subjects, especially if they are psychological or spiritual in some fashion.

The fact is the two can communicate and verbally they are probably non-stop talkers, just naturally compatible intellectually. Socially both are not so adept, being generally of the insecure persuasion, more comfortable at the fringe of a group as bystanders and observers, than in the thick of things. At the same time, both Peace and Dude are interdependent types, which mean they need relationships and do best when interacting rather than going it alone.

One caution for these two is the utter absence of practicality in both their charts. They both lack common sense, even if it is staring them in the face. Because of this, the two of them may wander quite far from the beaten path and manage to get themselves in situations that require they get bailed out. Both are responsible types, but both also are naïve when it comes to business and doing the obvious things.

Profile Summary



Profile Summary for Peace



Peace has great conceptual abilities, grasps things with her mind with ease, and can pick out the patterns right off. This talent for grasping abstract concepts makes her perfect for management that involves planning, in particular going forward. Peace is naturally forward looking, eager and interested in the future, perhaps even somewhat of a visionary. She is compassionate, aware of others, and is generally kind. There is one other point.

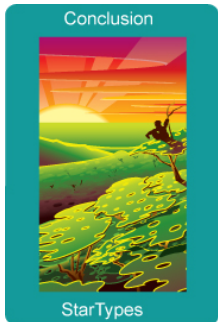
Peace's rather brilliant ideas always seem to come from a non-standard perspective. Her rather original point of view is always spot-on, but there is almost always something of a twist to where she is coming from, a different perspective. Peace marches to a different drummer.

Profile Summary for Dude



Dude has a strong proclivity for psychology, philosophy, and an ability to psych out and understand how the mind works, in general, and in particular. He is naturally fascinated by all things mental, especially spiritual and metaphysical ideas. Dude is thoughtful, careful, very enthusiastic, and generally future oriented. As mentioned, he is more mental, rather than physical and can on occasion get lost or enamored in the workings of his own mind, slipping a bit into syndromes or mental ruts that may require a little work or time to come out of.

Conclusion



This concludes your StarType Compatibility Report. In this report we have tried to point out not only the individual characteristics of each partner and how they might approach relationships, but also how the two partners may interface and get along. StarTypes compatibility represents the potential for the relationship and the relationship roles each of the partners naturally find comfortable. We hope you have enjoyed it.