

Star★Types
Life Path Report
Putting Yourself to Good Use



Astrological Profile for: Dude Jaway
by Michael Erlewine

Welcome to Life Paths

Index

- 1 [Welcome to Life Paths](#)
- 2 [The Heavenly Kaleidoscope](#)
- 3 [Reading Your StarType](#)
- 4 [Your Vocational StarType](#)
- 5 [In the Workplace](#)
- 6 [What About Money?](#)
- 7 [The Natal Chart](#)
- 8 [Chart Summary](#)
- 9 [Social Skills](#)
- 10 [Relationships](#)
- 11 [Job Placement](#)
- 12 [Business Skills](#)
- 13 [Polarities](#)
- 14 [Getting the Most](#)
- 15 [StarType Families](#)

Welcome to Life Paths



Welcome to 'Life Path' astrology, a personal report about finding Dude's vocation, the right path for him to succeed in life. Making a living, making our way through life, is something that each of us has to do and we don't always know what we really want to do until we find it. Many of us end up working at a job we did not really choose and for which we might not be all that well suited for or that will not make us all that happy.

Perhaps we have been educated, learned this or that particular skill, and already have some idea what we are good for and can do. We may or may not have had this or that kind of schooling or training, but that does not automatically mean that what we are doing for a living now is the only thing we can do or that we will be all that fulfilled doing it. What is Dude really good for? How might he be best put to use in this life? What would Dude be actually happy doing? These are the kind of questions that this report can be helpful at answering.

Astrology provides another look at Dude's vocational options, regardless of what he already thinks of himself or is doing for work, a second opinion and fresh take. The Life Path Report is designed to describe the basic role Dude tends to take on in life, his overall approach to work in this world, and how he might be most useful to himself and others. Being useful, being used in a way that is satisfying is one of the main keys to happiness. This report is designed to help put Dude in touch with his own core abilities and to sketch out an approach to work that should be natural for him.

You might ask: how can astrology, which links what is happening out there in the heavens with what is happening down here on earth possibly be useful in vocational matters? The answer to that question might well take an entire book, but let me try to give you some understanding of the approach taken in this report.

The Heavenly Kaleidoscope



The orderly movement of the planets around our Sun create an ever-changing, almost kaleidoscopic, series of patterns in the heavens which are actually quite beautiful. It is not that these patterns dictate or influence what takes place in our lives down here on Earth, but rather that the entire cosmos, the heavens and our Earth, are part of one time and space, one great cosmic dance. When some major planetary pattern forms out there in the heavens, something similar is happening down here in our lives as well. We are part of whatever is going on out there. We are inside it. It is all one universe we share, and somehow we are in synch here on earth with what is taking place out there. We all are dancing to the same tune.

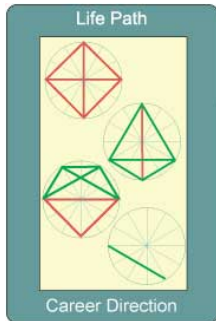
This is even clearer if we look at an astrological chart of the patterns in the heavens at the moment of Dude's birth. We see that all of the heavenly patterns taking place up there can be boiled down to form a few general archetypes (I call them StarTypes) that we can recognize. These StarTypes are associated with certain qualities that individuals here on earth have and act out in day-to-day life. The "Life Path Report" is based on interpreting these patterns for a particular birth, patterns which can help describe how to approach life. It is Dude's StarType patterns that are being interpreted here.

But this report may also require an effort to read between the lines and take what can be general observations and apply them to Dude's particular situation.

Note: At the very end of this report is a section on understanding the different types of StarType patterns. In some sections of this report, they will be referred to by name of the configuration (i.e. The Grand Trine), and also by their colored borders: green, red, blue, and rose. So please refer to that section for more details.

Dude's chart has what is called a "Mental" StarType, one that excels at using the mind and actually enjoys responsibility. For example, Dude might currently be working in the general workforce, with little actual mental or decision-making responsibilities. This can be read in more than one way. It might suggest that he would be happier working in a position that required more responsibility on his part or it could also suggest that he might be already be doing managerial-like activities as part of the job that he now has. In other words, while the Life Path report will show inclinations, it is up to each of us to see how those inclinations can be applied.

Reading the StarType



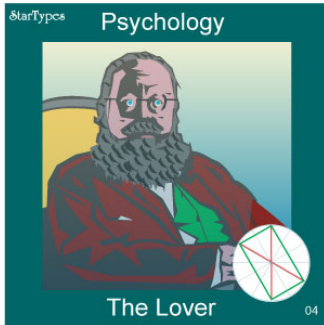
This is primarily a vocational report rather than a personal profile, but a brief natal description is included later on, so you may want to consult that. Here we will be describing Dude's overall approach to life and work.

Next, let's take a look at the general or overall approach that Dude takes to life. Here we are not trying to get down to specifics as much as we want to give a broad sketch of the role he might take in life as regards making a living.

With vocational analysis, a lot depends on the role we play in the workplace, and today's work environment traditionally has been divided roughly into several types. The most common division in the modern workplace is between the manager or supervisor types (organizational, mental, managerial, etc.) and the workforce (hands-on, take-directions, production) types.

And in between management and the workforce, there is a third type, what has been called the mid-level manager or independent type. These are the mediators or go-betweens for both the Manager and Hands-On types, and they often serve as the mouthpiece for either the workers or for management. Using this traditional division, first let's see what general work type is for Dude's chart:

This Vocational StarType



Dude is an example of the "Mental Type," and represent the planners and thinkers, those who direct and care for the overall work responsibilities. We call this StarType "The Caretaker," the responsible one, the one who cares the most, and thus (for all practical concerns) the caretakers of the project, office, or whatever requires simple responsibility. These StarTypes endlessly care for (and worry about!) almost everything, running here and there to provide for the well-being of whatever is the current object of concern. They are the eternal hosts, seldom the guests, of any relationship. They are the ones who jump up and get you a glass of water, who happily do any organizational work - and all the planning.

Not at home in a crowd, Dude can usually be found around the edges of a group, watching, perhaps criticizing, but always taking it all in. He runs cool, when others run warm (or hot). He thinks and plans, when others do. He serves, while others are served. He cares when care is needed. In the East (places like Tibet and China), Dude could be said to represent the Bodhisattva path, living to serve others.

Here in the West, the concept of serving others is considered a lesser position. In America it is considered much "more cool" to be served, than to serve. But this concept is slowly changing.

Not all of us are miniature rock stars, fit to shine in the heart of a crowd. Some are quite happy to watch, to comment on, and to care for others. We can't always just be the one who gets served. Some of us must do the serving and actually like to serve others and the fact is, if Dude can get past the social stigmata of "serving others," he will probably enjoy it a lot more, for it is natural to him.

In fact, this Dude is born for service, to be responsible, and to care for others and his type always reach for the mind before they reach to press the flesh. At heart Dude is shy, eager for experience, and glad to be included. Not much into hugs, he secretly loves to be hugged, and physical contact is an exciting event for him. Sounds like E.T., eh?

Well, not quite from outer space, but Dude is very at home in the great space of the mind, and he tends to make his living using his wits and mental capabilities rather than his charisma and warm presence. Dude can think, is clear minded, and he really gets the big picture and can see the forest as well as the trees. Dude's type make great providers of advice to the rest of us. He is also a wicked critic and is as sharp with the mind as others are physically adept.

And, as a rule, Dude is very compassionate, always appreciating a situation for what it is, making room for others, making allowances, and being kind.

So what is there to be known when meeting one of these managerial types like Dude? Expect a sharp mind, perhaps very broad in scope, but also facile and detail oriented. If allowed, that is, if one can assume the role of an object (someone to be cared for), he will probably assume the role of protector and caretaker. If met with criticism and mental arguments, one is in for a tussle, because this is his. He owns it.

But, as mentioned, if one sits back and lets Dude do his job, let him look after things, more often than not, he will do just that. On the outside Dude may appear stern or even wrathful, but inside he is easy, and will usually give way. He is the art of Aikido personified.

Dude has a strong proclivity for psychology, philosophy, and an ability to psych out and understand how the mind works, in general, and in particular. He is naturally fascinated by all things mental, especially spiritual and metaphysical ideas. Dude is thoughtful, careful, very enthusiastic, and generally future oriented.

As mentioned, he is more mental, rather than physical and can on occasion get lost or enamored in the workings of his own mind, slipping a bit into syndromes or mental ruts that may require a little work or time to come out of.

In these next two sections, we will first consider how Dude fits into the workplace and then some more personal observations. What we will point out here is something about Dude's talents and how they might relate to various career approaches.

Synopsis:

Dude is very idea oriented, at home in the mind, perhaps a little shy or awkward socially, but very wordy, interested in the psychological and the philosophical. Dude is not a people person. He cares for others, and is compassionate.

The Psychologist

Pros: Dude is very management oriented, using the mind, grasping ideas and patterns with ease, perfect for overseeing, supervision, and higher-level management decisions. He also possesses a natural sense of psychology, an ability to psych out and understand how the mind works, in general, and in particular cases. Dude is thoughtful, careful, and very eager and future oriented.

Cons: He runs cooler than warm, so probably is not cut out for sales or any position where rubbing up against the public is required. He tends to be shy and can even appear distant. He is mental, rather than physical and can tend to get lost in the workings of the mind.

With Co-workers:

Dude is always mentally stimulating, likes to talk, in particular when it comes to the workings of the mind, psychology, the psyche, philosophy, and all that. He is definitely more at home in the mind than at the center of the group, and probably tends to be somewhat shy, aside from all the gab. At heart, he is a caring and sensitive individual, who is very dependent on and stable in relationships. Full of grand ideas, plans, and talk of the future, Dude is naturally an enthusiast, but is not always very practical. He would often rather talk about it than do it.

What About Money?



A question all of us want and need to know is just how are we going to come by success and will we have any money? What follows consists of simple answers to a few basic questions and then a kind of quick summary of Dude's money making opportunities. "Dumb Luck" means you are just plain lucky and things fall into your lap. "Social Money" indicates that you can or will get money through your people connections and social skills. "Hands-on-Money" suggests that you make your money the old-fashioned way, by hard work, practical effort and ideas, and "Mind Money" points to making money and being successful by using your mind and intellectual gifts. None of this is written in stone, but in general, these factors points to how you may best be able to be successful and generate income.

Dumb Luck:

No.

Social Money:

No.

Hands-on Money:

No.

Mind Money:

Yes, all of it.

Dude will for the most part have to depend on his own mind and in particular his ability to use psychology and related concepts to move ahead in the world. His natural luck is not dumb enough to fall into money, but for him success has to be earned, step by step, using natural ingenuity and the mental edge. He is not naturally a glad-hander or social creature, but his analytical and evaluative abilities give him the edge he needs to succeed.

The Natal Chart



Now, putting career and workplace to the side, let's look at Dude's personal makeup, how he might approach friendships and romantic relationships, plus something about his overall approach to life.

Dude's mind and psychological prowess is the key to understanding his StarType. It is ALL about mental processes and mental states. He has a very strong mind and could be an expert psychologist and, at any rate, cannot avoid learning about the mind in all of its inner mechanisms and wanderings.

Naturally compassionate and responsive, Dude lives by his wits and intellectual abilities, and not by his group or people skills. If anything, he runs to the cool side. If there is any downside to all of this psychological prowess, it would be perhaps a tendency to get a little lost in the mind and wake up locked into one mental syndrome or another, some mental habit that is roaring like a freight train, who knows where. So take note.

As presented, Dude is more mental than physical, and would very much benefit from being drawn more down to earth. And relationships are one excellent way to help this happen. Being so mental, it is easy for him to get out of touch with day-to-day reality, the price-of-milk sort of thing. In fact, physicality - touching, feeling, hugging - is something that he should keep on his radar screen, since it can be easy for this StarType to let these more physical parts of life just slip away. Dude needs contact with other people and even just plain old physical contact.

So relationships are a natural for him, and he will tend to take on the roll of caregiver and lover - The Lover. His nature is to attend to, worry about, and generally look after others. A partner who is quite physical, even a trifle crude at times, would do him no harm. It might rock his dreamy boat, but it would help to wake him up to his physical nature and help to pull him down to earth.

Relationships are one excellent way to help this happen. Being so mental, it is easy for him to get out of touch with day-to-day reality, the price-of-milk sort of thing. In fact, physicality - touching, feeling, hugging - is something that he should keep on his radar screen, since it can be easy for this StarType to let these more physical parts of life just slip away. Dude needs contact with other people and even just plain old physical contact.

Dude's mind is where he spends his time, and using the mind to analyze and serve others is a major talent. His sense of psychology is profound and always to the fore. The winds of the mind are always blowing for him and, as mentioned earlier, if there is one caution, it is for him to be careful not to be drawn into mental syndromes or loops, which can be hard to break out of.

As for reaching out, it would be beneficial for Dude to spend time with the red StarTypes, such as the T-Square types, where he can actually get more down to earth, feel more, and get more common sense -- enjoy himself a bit.

On the other hand, accessing GREEN LINE Star Types, like the Grand Trine and the KITE (StarType # 5), will help to clear up mental cloudiness that sometimes creeps into his StarType. These types are a natural astringent and, like smelling salts, help to wake him up.

As for the blue-bordered cards, keep in mind that they have the qualities of both the red-bordered and the green-bordered cards within their makeup. When relating to them, Dude will want to invoke the attention-demanding part of them, having them take on the role of the loved one - someone for him to look after.

KEYWORDS

Powerful mind and mental presence.

An innate sense of psychology and a looking inward.

Conceptual.

Psychological.

Introspective.

Chart Summary



There is no use in just offering a list of professions, like: butcher, baker, candlestick maker, because even each of those professions has all kinds of levels and functions. For example, I could say to you that the 'baking' industry would be a good bet for a person. But in that industry, there are all kinds of job functions aside from just kneading the bread. Aside from the bread makers, there are the fine pastry makers, the oven experts, wholesalers, retailers, salespersons, and so on all connected to the baking profession.

Instead, in here we will concentrate on some general skills Dude has that can be applied to any industry or profession. For example, is Dude better at using his mind or would he rather be physically involved working closely with people and things? Is Dude analytically inclined or more creative and intuitive? Does he prefer to let other people supervise and have those responsibilities or does he enjoy the responsibilities management brings? It is these kinds of questions I will try to sum up here and they can relate to almost any kind of work or business.

SKILLS:

Psychological, Analysis, Counseling, Spiritual, Mental, Intellectual

LACKS:

People Skills, Sales Ability, Group Leadership, Glad-Handing, Intuition

**Social Being:**

Dude is not comfortable as a social being, although he may think so. Intellectually social? Yes, but rubbing shoulders and the give and take of a cocktail party? Probably not.

Meet & Greet:

Dude does not naturally enjoy meeting & greeting, the usual social glad-handing that is expected of one when business calls for it. He likes the intellectual banter, but essentially is shy.

Sensitivity:

Dude is (or can be) very sensitive, perhaps often somewhat shy, and even self-effacing at times.

Wallflower:

Yes.

Private:

Dude is not private, but rather open, at least mentally and psychologically. No secrets.

Direct/Indirect:

Dude is naturally direct and straightforward. What you see is what you get.

Collegial:

Dude is always formally (and intellectually) friendly and collegial, but is not naturally warm or very social, probably won't offer you the fraternity handshake.

Self-Confidence:

Dude is intellectually confident, but may be socially less so.

Relationships



Relationships:
Dude needs relationships.

Romantic Role:
Dude likes to take on the role of "lover" or caretaker in a relationship.

Office Role:
In an office environment, Dude prefers the role of supervisor or manager of some kind.

Independent:
No.

Interdependent:
Yes.

Needy:
Yes, in relationships.

Job Placement



Business type:
Conceptual.

Responsible:
Yes, very.

Management Skills:
Excellent.

Salesperson:
No.

Teamwork Skills:
Intellectual teamwork, yes.

Advisor:
Dude makes a good advisor.

Supervising:
Yes, the best.



Business Skills



Communication Skills:

Yes, at mental communication.

Intuitively Creative:

Not naturally good.

Work Ethic:

Very responsible.

Analytical Skills:

Excellent.

Organizational Skills:

Good organizational skills.

Detail Work:

Good at detail work.

Thoughtful:

Very.

Smart:

Yes, very smart.

Intellect:

Excellent.

Interpersonal Skills:

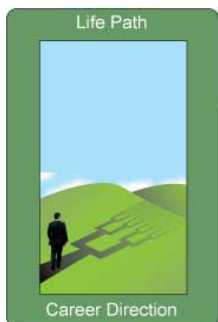
Best at verbal and written.

Problem Solving:

Good.

Group Leader:

Probably not, or if so, then intellectually only.



The following is a simple list of polarities (many traditional) as they relate to Dude and his particular StarType. These are included on the case that the earlier material is not sufficiently clear on. Perhaps looking at Dude through this list of polar opposites may help make things more clear and provide a better feeling for this person. Here is the list:

Host or Guest:

Prefers the role of host.

Impress/Express:

Likes to impress.

Watcher/Watched:

Watcher.

Reason/Intuition:

Reason rather than intuition.

Careful/Careless:

Careful.

In/Out:

Out and wants in.

Evolve/Involve:

Wants to be more involved.

Subject/Object

: Assumes the role of subject.

Lover/Loved One:

Likes the role of the 'Lover'.

Mental/Physical:

More mental than physical.

Self-Conscious?:

Yes.

Sensitivity or Lack-of?:

Sensitive.

Awareness Factor:

Very aware.

Vertigo/Claustrophobia:

Vertigo.

Foresight/Hindsight:

Foresight.

Seeing/Feeling:

Seeing.

Reasonable/Unreasonable:

Reasonable.

Yin/Yang:

Yin.

Subtle/Dense:

Subtle.

Spirit/Flesh:

Spirit.

Service Factor:

Born to serve.

In/Out:

Outside looking in.

Active/Passive:

Passive, like Aikido.

Getting the Most Out of Your Life Path Report

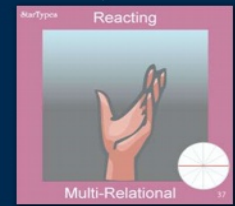
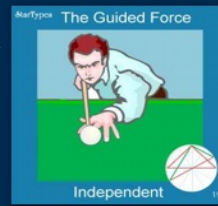


This report is designed to offer a second opinion, an alternate look at the talents Dude has and what kind of approach to work and career might be most natural for him regardless of what he may have trained for or currently be doing.

What he reads here may provide a somewhat different approach to career than Dude has envisioned for himself, so take time to let it all sink in. Keep in mind that a career is more than just a job. A career is a life-path, literally the path or way each of us goes through our life, and it can make all the difference if we are doing something that resonates with our natural talent, that uses us as we like to be used, as opposed to working at a job that goes against our natural grain.

Sometimes a simple adjustment in approach can make the difference between the happiness of a successful and happy career and a job for which we are not suited and was never meant for us in the first place. It is my sincere hope that this Life Path Report may provide information that is helpful in evaluating and making career decisions.

Learn more about StarType Families

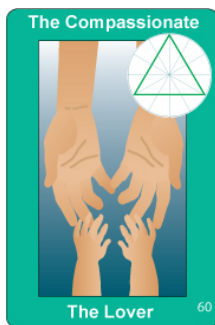


StarTypes analysis excels in vocational and relationship analysis and it can be useful to know something about each of the four most common relationship roles that StarType covers, these roles indicated by the red, green, blue, and rose-colored borders of the StarType cards. Let's go over the basic relationship types.

First let's make sure that we are clear about what we mean by relationship, and this holds true for all relationships: lovers, friends, not-so-friends, co-workers, and even not-so-friends..

Any relationship of two persons, given time, usually resolves itself into one of four main general styles or types, in which each partner in the relationship takes on a particular role. Of course, the two classic roles are that of the "Lover" and the "Loved One," as in Romeo is the lover and Juliet is the object of his love or loved one. A more modern way of saying this might be that in most relationships, someone picks up the dirty socks (lover or caretaking role) and someone lets the socks lay there (loved one or taken-care-of role). StarType analysis is quite accurate at showing you ahead of time who is likely to be the Lover and who the Loved One. To make it easier, we use four colors to mark the four major types of relationships:

Green: The Lover



GREEN: The green-bordered cards represent "The Lover" StarType family. They take on the role of the lover, the observer and annotators, and the caretaker of the relationship.

Examples of classic green-bordered StarType patterns include the Grand Trine (#60), Kite (#5), Basket (#21), Wedge (#2), Mystic Rectangle (#4), and others.

Red: The Loved One



RED: The red-bordered StarType cards are reserved for the "Loved One" family, the ones who are watched, cared for, and observed. These are the StarTypes with all the charisma. They like attention and usually take on the role of the watched - the Loved One.

Examples of classic red-bordered cards include the T-Cross or T-Square (#1) and the Grand Cross (#3).

Blue: Independent



BLUE: Some chart patterns have both roles in a single natal chart, the role of the Lover and the Loved One. When both qualities ("Loved One" and "Lover") appear in the same chart, these are the "Independent" StarTypes, and their borders are blue. They can go both ways. In some relationships they take on the role of the Lover, but in others they assume the role of the Loved One. They are somewhat self-contained.

Examples of classic blue-bordered cards include T-Cross & Grand Trine (#7), Grand Cross & Grand Trine (#12), T-Cross & Wedge (#10), and others.

Rose: Multi-relationship



ROSE: And last, there is a small group of StarTypes that demand a lot of contact and relations, called appropriately the "Multi-" or "Many-Relationships" StarTypes, which have rose colored borders.

Examples of classic rose-bordered cards include Within-a-Trine (#36) and Within-180 (#38).